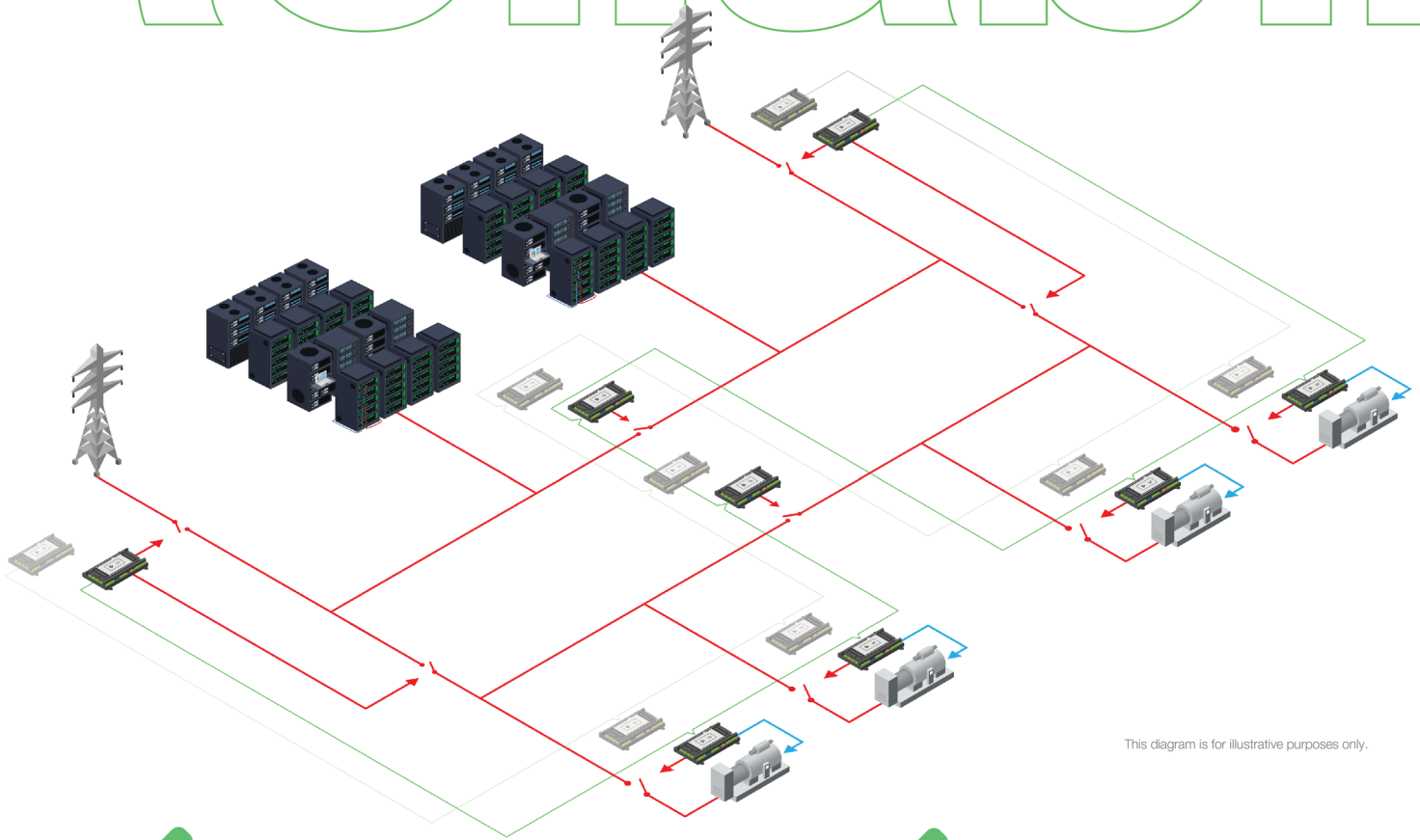




**Keeping
the Power Up
at All Times**

Datacentre Power
Control Solutions

Reliability



This diagram is for illustrative purposes only.



Hot swap controller redundancy
Communication redundancy



Compliance with standards that meet and exceed the rigorous requirements of Tier III and Tier IV datacentres

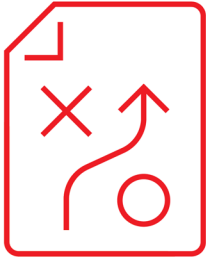


Reliability is essential for critical datacentre operations.

30+

Over 30 Years of Experience in Smart Control

- > Hundreds of state-of-the-art solutions built
- > Topologies like “**Ring busbar**” or “**Double busbar (A+B)**”
- > Including easy-to-use onboard controller & communication redundancy



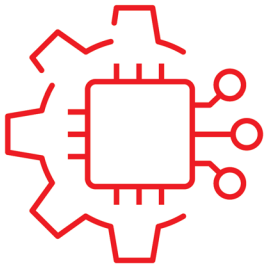
Flexibility

Power source agnostic

- > Compatible with any system topology or complex requirements
- > No restrictions on site topology
- > Pre-programmed functions with an easy-to-use PLC interpreter for adaptable operation logic

Configurable signal exchange over CAN

- > Reduces the need for additional wiring



Scalability and Future-Proofing

Seamless site expansion with added renewable energy sources

- > Easily add additional controllers to the existing ComAp system

Designed to accommodate large and complex sites

- > Supports **up to 64 controllers** by default
- > Scale **up to 4,032 controllers** with the Bank Controller concept



ComAp in Numbers

550+ employees worldwide

200+ R&D employees

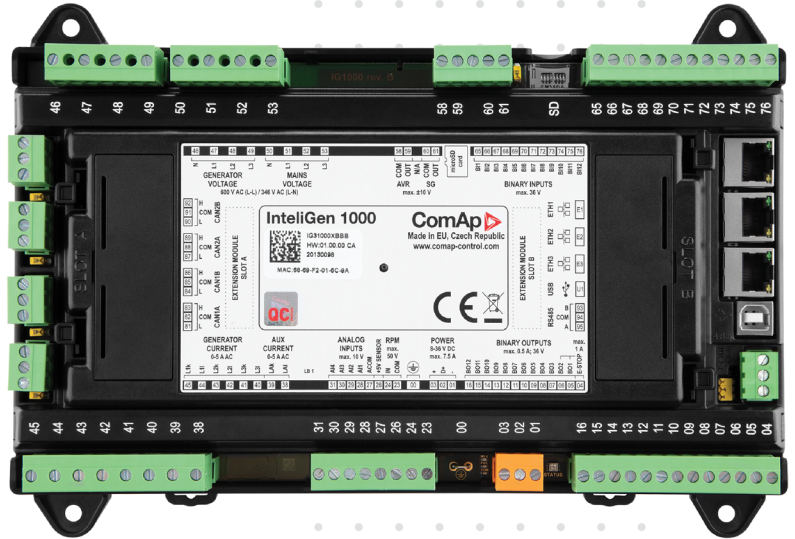
26 offices globally

80+ distributors

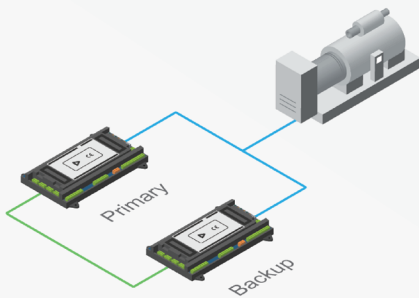
comap-control.com

InteliGen 1000

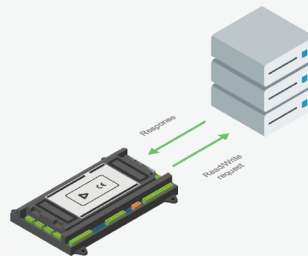
InteliGen 1000 is the most advanced ComAp gen-set controller for multiple gen-sets with paralleling operations, with or without connection to the mains or other source. Intended primarily for switchgear applications, this high-end controller will help you control and monitor demanding projects with critical infrastructures such as **datacentres, hospitals and banks.**



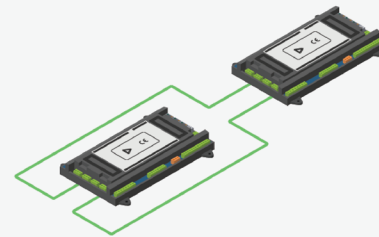
Extended Features Examples



Hot Swap (controller) redundancy



Modbus Client



Communication redundancy



▶ Explore all extended features



Extended Features

Ready for the Future

Sustainability is at the heart of everything we do, driving innovation for a better tomorrow.



Sustainability



Seamless integration of renewable energy sources with our IntelliNeo product line



Helping businesses reduce CO2 emissions through smarter energy solutions



Transparent CO2 footprint data available for corporate sustainability reporting



Original content

